



Mouse anti p57 Monoclonal Antibody

Alternative Name(s): Cyclin-dependent kinase inhibitor 1C; CDKN1C; P57; P57KIP2

Order Information

- **Description:** p57 /Kip2
- **Catalogue:** 500-6354
- **Lot:** See label
- **Size:** 100ug/200ul
- **Host:** Mouse
- **Clone:** KP10
- **Application:** IHC(P), WB
- **Reactivity:** Hu,Ms

ANTIGEN PREPARATION

Recombinant human p57/Kip2 protein.

BACKGROUND

p57/Kip 2 (or CDKN 1C) is a tight-binding strong inhibitor of several G1 cycline/Cdk complexes and a negative regulator of cell proliferation. The gene is a tumor suppressor which is located on chromosome 11p15.5. Mutations in this gene are implicated in sporadic cancers and Beckwith-Wiedemann syndrome (BWS). Several types of childhood tumors including Wilms' tumor, adrenocortical carcinoma and rhabdomyosarcoma display a specific loss of maternal 11p15 alleles, suggesting that genomic imprinting plays an important part. This region also contains two other imprinted genes, insulin like growth factor II (IGF II) and H19, both of which seem to be implicated in adrenal neoplasms.

PURIFICATION

The mouse IgG is purified by Protein A-Affinity Chromatography according to Isotyping

FORMULATION

This affinity purified antibody is supplied in sterile Phosphatebuffered saline (pH7.2) containing antibody stabilizer

SPECIFICITY

This antibody recognizes human p57 protein. It cross reacts to mouse. The other species was not tested.

STORAGE

The antibodies are stable for 24 months from date of receipt when stored at -20°C to -70°C . The antibodies can be stored at 2°C - 8°C for three month without detectable loss of activity. Avoid repeated freezing-thawing cycles.

APPLICATIONS/SUGGESTED WORKING DILUTIONS*

- Western Blot: 0.1-1 $\mu\text{g/ml}$
- ELISA: 0.01-0.1 $\mu\text{g/ml}$
- Immunoprecipitation: 2-5 $\mu\text{g/ml}$
- IHC: 2-10 $\mu\text{g/ml}$
- Flow cytometry: Not tested
- Molecular Weight: 57.0
- Positive Control: Kidney Tissue
- Cellular Location: Cell Membrane

*Optimal dilutions should be determined by researchers for the specific applications.

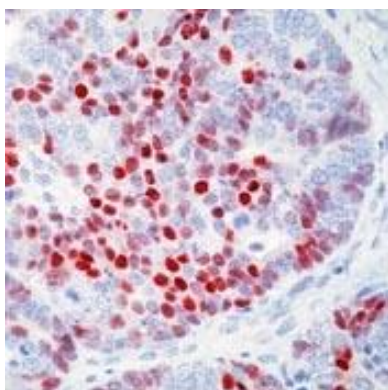
FOR RESEARCH USE ONLY.

AbboMax, Inc 2528 Qume Drive, Suite 8, San Jose, California 95131, USA
1 408-573-1898 (Tel). 1 408-573-1858 (Fax). www.abbomax.com info@abbomax.com

DATA ATTACHMENTS



Western Blot: The cell lysate derived from Human LS174T cells (20 ug/lane) was immunoblotted Mouse anti P57 (Cat# 500-6357). A major band around ~57 kDa is observed.



Immunohistochemistry: The human Breast carcinoma tissue (FFPE) was stained with Mouse anti p57 monoclonal antibody (Cat#500-6354) at 1:100. (Note: formalin-fixed, paraffin-embedded sections need 15 minutes heat-induced epitope retrieval in 10 mmol/L citrate buffer, pH 6.0, and 30 minutes incubation at room temperature with the primary antibody.)

REFERENCES

FOR RESEARCH USE ONLY.